



January 2023



## MADE IN ITALY

Bringing Italian passion  
and precision to every  
product we design



## MADE IN ITALY

**Okbaby** is, and always has been, a family-run business. **Italian passion**, experience, and hard work behind every product we design, **since 1976**. We're proud to bring the highest quality infant and toddler products to your home.

Okbaby has specialized in the molding of plastic rubber and has expanded its structure to **12,000 square meters**.







**5-25**

BABY BATH



**26-29**

ECO LINE



**30-36**

BABY-CARE



**37-49**

HYGIENE



**50-54**

IN & OUT



**55-62**

BIKE SEATS



**BABY BATH  
LINE**

Raising an enthusiastic child

0-12 MONTHS  
Conform to the European Standard  
**EN 17072**

**MAX 15 KG**  
Child's maximum weight  
Conform to the European Standard  
**EN 17072**

ERGONOMIC DESIGN  
THAT GUARANTEES  
A CORRECT POSTURE  
OF THE BABY

COMPACT, LIGHTWEIGHT  
AND EASY TO CARRY  
THANKS TO ITS  
BATH STAND

POSITIONING  
SUPPORT

N.923

**BELLA**

The cozy bath



N.925

**THE BELLA  
BATH KIT**

The perfect bath  
combination



- Ergonomic and innovative design
- Cozy bath, to ensure the maximum comfort for the baby
- Double position seat: 0/6 months and 6/12 months
- Built-in thermometer and recommended water level indicator
- Quick-drain plug with safety key
- Compatible with bath stand for Bella cod. 924
- Cm 78,5 x 50 x 25,5

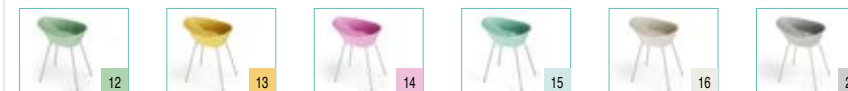
- Compatible only with Bella bath cod. 923
- Folding bath stand
- Easy to store away, legs can be dismantled and it keeps very few space!
- Legs provided with anti-slip rubber pads
- Provided with hose and funnel kit for an easy water drainage
- Opened dimensions:  
cm 67 x 54,5 x 74
- Closed dimensions  
cm 85 x 15 x 74



Colours available



Colours available



N.924

**BATH STAND  
FOR BELLA  
BATH**

The practical and  
light bath support



0-12 MONTHS  
Conform to the European Standard  
**EN 17072**

ERGONOMIC DESIGN  
THAT GUARANTEES  
A CORRECT POSTURE  
OF THE BABY

DOUBLE POSITION SEAT:  
0/6 AND 6/12 MONTHS

THREE RESTING POINTS:  
TWO AT THE ARMPITS  
ONE BETWEEN THE LEGS

N.823

# ONDA BASIC

The smart tub



0-12 MONTHS  
Conform to the European Standard  
**EN 17072**



ERGONOMIC DESIGN  
THAT GUARANTEES  
A CORRECT POSTURE  
OF THE BABY

DOUBLE POSITION SEAT:  
0/6 AND 6/12 MONTHS

THREE RESTING POINTS:  
TWO AT THE ARMPITS  
ONE BETWEEN THE LEGS

SLIP-FREE RUBBER SEAT

N.808

# ONDA EVOLUTION

The non-slip tub



- Ergonomic contours comfortably support baby in a reclining or sitting position
- Integrated safety supports help position baby and prevent slipping
- Built-in thermometer and recommended water level indicator
- Convenient shelves hold bath accessories or toys
- Quick-drain plug with safety key
- Cm 54 x 28 x 94

- Ergonomic contours comfortably support baby in a reclining or sitting position
- The plastic and rubber of the bath tub form a single piece, facilitating the cleaning and improving the hygiene
- Integrated safety supports help position baby and prevent slipping
- Built-in thermometer and recommended water level indicator
- Convenient shelves hold bath accessories or toys
- Quick-drain plug with safety key
- Cm 54 x 28 x 94

Colours available



Colours available







0-12 MONTHS

Conform to the  
European Standard  
**EN 17072**

ERGONOMIC DESIGN  
THAT GUARANTEES  
A CORRECT POSTURE  
OF THE BABY

COMPACT, LIGHTWEIGHT  
AND EASY TO CARRY

ANTI-SLIP BASE

POSITIONING SUPPORT

N.892

**ONDA  
BABY**

The compact bath



- Compact and lightweight
- Liquid crystal thermometer
- Recommended water level indicator
- Anti-slip, rubber feet for greater stability
- Quick-drain plug
- Fits inside bath or shower
- Cm 42 x 24 x 63

Colours available



0-12 MONTHS

Conform to the  
European Standard  
**EN 17072**

COLLAPSIBLE FOLDING  
BATH TUB

ONCE CLOSED IT BECOMES  
ONLY 9 CM THICK

DOUBLE POSITION SEAT:  
0/6 AND 6/12 MONTHS

IT CAN BE USED IN THE  
SHOWER, IN THE ADULT TUB  
OR ON ANY STABLE SURFACE

N.895

**ONDA  
SLIM**

The folding tub



- The perfect solution for little space, it is made of soft polypropylene to guarantee maximum comfort
- Equipped with lockable supports with non-slip contact points that have an excellent level of stability
- Equipped with an asymmetrical inguinal resting point that allows the use in the two sitting positions (0/6 and 6/12 months)
- It is easy to store away or to transport
- Open bathtub dimension: cm 81,2 x 21,8 x 48
- Closed bathtub dimension: cm 81,2 x 9 x 48



Colours available





12-36 MONTHS Conform to the European Standard EN 17072

MAX 15 KG Child's maximum weight Conform to the European Standard EN 17072

VERY WIDE AND SPACIOUS TUB

PERFECT FOR INDOOR AND OUTDOOR

ERGONOMIC DESIGN THAT GUARANTEES A CORRECT POSTURE OF THE BABY

N.813

**OPLA'**

A private mini swimming pool



- Soft padded mat
- It can be used on bath stand n. 845
- Easy to clean
- Can be used on any flat surface
- Cm 42 x 2,5 x 59

N.884

**HANDY PADDED MAT**

A soft place where to change your baby



- Ergonomic seat position
- Fits inside a shower with a minimum size of 70 x 70 cm
- Exterior sides are angled for extra stability
- Anti-slip, textured floor
- Quick-drain plug with safety key
- Hygienic and easy to clean
- Recommended water level indicator
- Easy-grab handles
- Cm 63 x 41 x 61

Colours available



- Foldaway bath stand compatible with Onda and Onda Evolution bath tubs
- Anti-Slip rubber pads
- Provided with hose and funnel kit for an easy water drainage
- It can also be used as changing table with our Handy Padded Mat art 884
- Opened dimentions: cm 81 x 101 x 61
- Folded dimentions: cm 61 x 90 x 21,5



N.845

**BATH STAND**

The steady bath support

**0-8 MONTHS**  
**MAX 8 KG**  
 Child's maximum weight  
 Conform to the European Standard  
**EN 17022**

**0-8 MONTHS**  
**MAX 8 KG**  
 Child's maximum weight  
 Conform to the European Standard  
**EN 17022**

SAVE SPACE  
 FOLDS FLAT  
 SOFT NON-SLIP MESH  
 LOCKING TAB  
 HANGING TAB

N.910  
**JELLY**  
 The folding bath support



ERGONOMIC DESIGN  
 THAT GUARANTEES  
 A CORRECT POSTURE  
 OF THE BABY  
 THREE RESTING  
 POINTS  
 SLIP-FREE  
 RUBBER SEAT

N.794  
**BUDDY**  
 The ergonomic slip-free bath support



- Seat in soft perforated rubber that increases breathability and facilitates rinsing
- It facilitates water contact with the baby while keeping it warm
- It is equipped with anti-slip base
- It can be placed in a drawer or hang up using with its specific hook
- Save space thanks to the easy locking system
- Open dimensions: cm 31 x 21 x 53
- Closed dimensions: cm 31 x 12 x 56

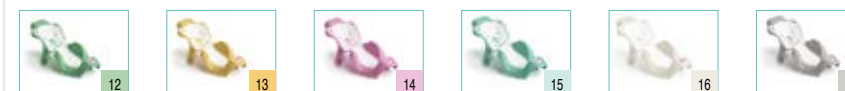
Colours available



- The seat features three resting points: two at the armpits and one between the legs
- Slip-free rubber seat. Plastic and rubber form a single piece, facilitating the cleaning and improving the hygiene of the baby
- Secured by suction pads, fits safely to an adult bath (except those with non-slip base)
- Cm 28 x 25 x 64



Colours available





**6-15 MONTHS**  
**MAX 13 KG**  
 Child's maximum weight  
 Conform to the European Standard  
**EN 17022**

**6-15 MONTHS**  
**MAX 13 KG**  
 Child's maximum weight  
 Conform to the European Standard  
**EN 17022**

FRONT OPENING SYSTEM  
 THAT SIMPLIFYING  
 THE POSITIONING  
 OF YOUR BABY

SEAT WITH HIGH  
 BACKREST FOR  
 MAXIMUM COMFORT

SECURED BY  
 SUCTION PADS

N.871  
**CRAB**  
 The opening  
 bath seat



SLIP-FREE  
 RUBBER SEAT  
 SECURED BY  
 SUCTION PADS

N.799  
**FLIPPER  
 EVOLUTION**  
 The bath seat with  
 slip-free rubber



- It is provided with a safety system that prevents the baby from opening it
- The seat features a front opening simplifying the positioning of your baby whilst getting in and out of the bath seat
- Fits safely to an adult bath (except those baths featuring a non-slip base)
- Integral maximum recommended water level indicator
- Cm 39,5 x 24 x 37,5

Colours available



- The plastic and rubber of the bath seat form a single piece, facilitating the cleaning and improving the hygiene
- Built-in thermometer and recommended water level indicator
- Fits safely to an adult bath (except those baths featuring a non-slip base)
- Two toys on top ring keep baby entertained
- Cm 38 x 24 x 36

Colours available





8-36 MONTHS

PROTECTS  
EYES AND EARS

HANDS-FREE  
SOAP SHIELD

STRETCHES FOR  
A CUSTOM FIT  
AS BABY GROWS

N.829

**HIPPO**

No more tears



SHOWER HEAD

WIDE LATERAL HOLE

CAN BE FIXED  
TO OUR BABY BATHS

N.889

**SPLASH**

A useful and handy  
shower head



- Wide visor in polypropylen shields eyes and ears from water and soap
- Soft, stretchy rubber band for a custom fit
- Fits 18-20 in. diameter (45/52 cm)

- Shower head to gently rinse your baby
- The wide lateral hole helps fill the shower head up without opening the cap
- It can be fixed to our baby baths Onda and Onda Evolution
- Capacity 50 cl
- Cm Ø 7-10, H 21



Colours available



Colours available





LONG LASTING  
EXTRA-SOFT  
ABSORBENT

N.847-848  
**SPONGES**  
Natural sea sponges



- Sea sponges responsibly harvested from the Mediterranean sea
- Spa-quality, doesn't shed with use
- Extra-soft and absorbent
- Gentle on sensitive skin



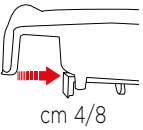
**848 SILK FINE**  
Quality most appreciated for its softness and especially suitable for babies and sensitive skins.



**847 HONEYCOMB**  
Quality well known thanks to its softness and endurance, it is soft and delicate on the skin.



Colours available



- Mini sink equipped with a folding and shatterproof mirror
- Adjustable arm allows the mini sink to fit both baths and bidet
- Quick drainage plug
- Cm 39 x 13 x 40

N.819  
**SPACE**  
The mini sink



- Cushion knees while bathing your baby
- Secured by suction cups
- Waterproof and easy to clean
- Comfortable headrest for adults when it's their turn in the tub!

N.801  
**MOBY PAD**  
Comfort 2-in-1





## FOLDING BATH STANDS

EASY TO STORE AWAY  
AND DISMANTLE

LEGS ARE PROVIDED  
WITH ANTI-SLIP  
RUBBER PADS

N.893-897

## METAL BATH STANDS

The supports for  
the bath tubs



**N.893**

- Can be used with our Onda and Onda Evolution bath tub
- Opened dimentions: cm 105 x 93 x 73  
Folded dimetions: cm 105 x 110 x 22



**N.897**

- Can be used with our Onda Baby
- Opened dimentions: cm 94 x 94 x 63  
Folded dimetions: cm 94 x 104 x 18



- Can be used with our Onda and Onda Evolution bath tub
- Measure of minimum extension: cm 53
  - Measure of maximum extension: cm 75

N.809

## SUPPORT BAR KIT

The ideal support



- Extremely soft and absorbent
- 70% bamboo, with natural antibacterial properties, 30% organic cotton
- Practical to wear, it ensures a natural protection for babies' delicate and sensitive skin
- Cm 75 x 75

N.849

## KOALA

Bamboo  
hooded towel

- Bath storages
- Adjustable for a custom fit
- Ideal for tidying toys
- Easy to remove and store when not needed
- Perforated base
- Cm 30,5 x 17 x 30,5

N.792-832

## CORALL & MUGGY

No more mess



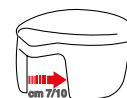
**N.832 MUGGY**

- Provided with a bucket to rinse the child's head
- Cm 30,5 x 22 x 30,5



**N.792 CORALL**

- Cm 30,5 x 17 x 30,5



cm 7/10





- Floating toys
- Turning the wheel under the belly, they can really swim!
- Keeping the baby entertained during the bath time and developing children's motor skill
- Hollie whale: cm 13,5 x 6,9 x 14
- Rollie puffer fish: cm 13,1 x 6,4 x 11,5

N.913-914

# HOLLIE & ROLLIE

The swimming whale and puffer fish



CE

CE



- Bath net toy to develop children's motor skill and eye-hand coordination
- Compact size perfectly fits little hands, kids can easily hold it
- It can be attached to the bath tube or to any flat surface thanks to the suction cup
- Cm 4,5 x 25,1 x 13

N.912

# CHARLIE

The catch-all bath net

- Four floating friends will entertain your baby during bath time
- Baby can scoop and pour water but also stack all fishes on top of each other
- Developing children's motor skill and creativity
- Cm 9,6 x 8,2 x 13,7

N.911

# THE FUNNIES

Pouring bath toys



CE



- Travel bag included



CE

- Soft five rubber toys
- Bright colours toys to develop children's sight skill
- Cm 16 x 10 x 10

N.846

# WATER TOYS

Little floating friends



Made in Italy

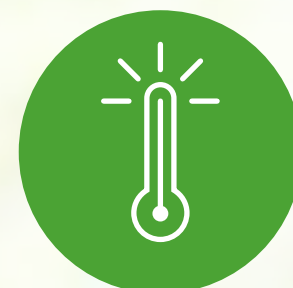


## WE ARE WORKING FOR A SUSTAINABLE FUTURE

The challenge: find the right materials to preserve our quality standards, guarantee the highest level of safety and respect the environment.



**SUSTAINABLE AND CIRCULAR  
PRODUCTS**  
To reduce new plastic production



**CLIMATE CHANGE**  
Up to **70% less of CO2** emissions  
compared to the use of virgin  
material



**LESS PLASTC WASTE IN THE  
ENVIRONMENT**  
Preserve the health of our planet





## A NEW AWARENESS

MADE WITH 98% RECYCLED PLASTIC

REDUCTION OF  
CO2 EMISSIONS

LESS PLATIC  
WASTE DISPOSED  
IN THE ENVIRONMENT

SUSTAINABLE  
CIRCULAR ECONOMY



- Liquid crystal thermometer
- Anti-slip, rubber feet for greater stability
- Quick-drain plug and recommended water level indicator
- Fits inside bath or shower
- Cm 42 x 24 x 63



0-12 MONTHS

Conform to the  
European Standard  
**EN 17072**

ERGONOMIC DESIGN  
THAT GUARANTEES  
A CORRECT POSTURE  
OF THE BABY

COMPACT, LIGHTWEIGHT  
AND EASY TO CARRY

ANTI-SLIP BASE

POSITIONING SUPPORT

N.892

**ECO  
ONDA  
BABY**

The eco compact bath

ERGO-COMFORT

SPLASH GUARD

EASY TO CLEAN

N.891

**ECO  
PASHA**

The next  
generation  
potty



- Removable, inner bowl with easy to grab handle for quick, efficient clean up
- High backrest that ensures the maximum comfort
- Tapered front makes it easy for toddler to sit down and stand up
- Seamless seat for comfort and cleanliness
- Splash guard for boys
- Cm 33,5 x 36,5 x 31

- Can be fitted securely to most toilet seats
- Splash guard for boys
- It goes between the toilet bowl and the seat
- Cm 32 x 14 x 38



ERGO-COMFORT

MAXIMUM ADHERENCE

SPLASH GUARD

EASY TO CLEAN

N.821

**ECO  
ERGO**

The easy eco  
toilet trainer





## BABY-CARE LINE

Because we care



### Exclusive ingredient: FUCOSE

Okbaby, in conjunction with skin care experts, created a baby care line, that is formulated using an **exclusive ingredient** with extremely beneficial properties for the skin.

**Fucose** is one of the eight essential sugars, which our organism needs to function properly. Fucose is found in breast milk and is considered a unique and fundamental food source for the proper growth and development of baby. For the maintenance of healthy skin Fucose plays a vital part.

Dermatological studies have shown that Fucose properties are extremely beneficial for the skin:

- **Skin barrier:** In combination with proteins and lipids it creates glyco-conjugates, which cover the surface of every human cell.
- **Skin Regeneration:** It stimulates the skin-regeneration process.
- **Hydratation:** Ensure the maintenance of hydratation and skin elasticity.

**All our products are free of:** silicones, peg, phthalates, sles

They are formulated with **hypoallergenic fragrance**.



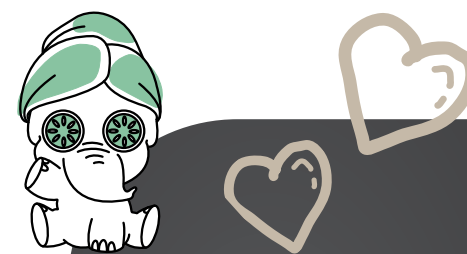




N.915

## SHAMPOO & BODY WASH

A gentle cleansing



N.917

## BODY LOTION

A daily cuddle

Its **natural formula** gently cleans baby's skin from birth. Formula containing hydrolyzed rice proteins and surfactants derived from vegetable oils that gently moisturize and soften the skin and hair of newborns.

It can safely be used in the daily routine for healthier skin and hair.

### Main ingredients:

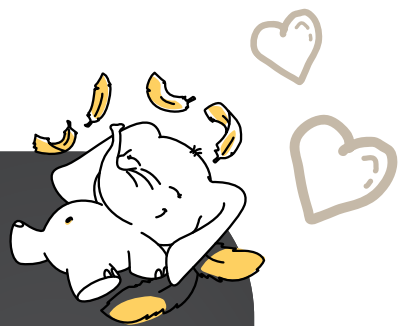
- **Fucose**, sugar contained in breast milk, moisturizes and protects the skin.
- **Surfactant 100% naturally** derived from **Coconut** and **Sunflower oil** that gently cleanses the skin.
- **Hydrolyzed Rice Proteins** contrast skin irritations and moisturize and soften skin and hair.

Our body lotion gently moisturizes baby's skin keeping it soft and silky. Its light and fluid texture is easily absorbed and adds a **delicate fragrance**. Formulated with skin-nourishing sweet almond oil for added hydration of baby's skin.

### Main ingredients:

- **Fucose**, sugar contained in breast milk, moisturizes and protects the skin
- **Sweet Almond oil**, with emollient, nourishing and soothing properties. It is an oil suitable for all skin types and it is particularly suitable for dry and irritated skin
- **Emulsifier of vegetable origin** increases moisturizing properties.





N.916

## OIL GEL FOR BODY

A sweet touch



N.919

## CREAM FOR SENSITIVE SKIN

A delicate relief

New innovative body oil gel formulated with Vitamin E and sweet almond oil, leave the skin soft as silk.

It can be used as:

- **Massage Oil-Gel**, it's the ideal product for a relaxing baby massage. Does not drip, leaves no residue and is easily absorbed by baby's skin, adding a smooth silky touch.

- **Mild soap**, cleanses the skin without removing baby's essential oils.

It does not dry out the baby's skin.

For optimal skin care treatment, use our Oil gel for body as a cleanser in combination with our Cream for sensitive skin.

### Main ingredients:

- **Oil**, with an emollient and moisturizing agent, ideal for sensitive skin. It also contains **Omega-6 and Omega-9 fatty acids**.
- **Vitamin E**, is a fat-soluble vitamin with strong antioxidant, emollient and moisturizing properties.
- **Sweet Almond oil**, with emollient, nourishing and soothing properties. It is an oil suitable for all skin types and it is particularly suitable for dry and irritated skin.

Delicate face and body cream specifically formulated with active ingredients specific to **alleviate redness and skin irritation**.

Our special formula has emollient agents that help nourish, heal and protect the baby's skin. Formulated with **phytosterols** with soothing and lenitive action and **inulin** that protects the regular balance of the skin.

For a greater soothing and calming treatment use in combination with our Oil gel for body.

### Main ingredients :

- **Fucose**, sugar contained in breast milk, moisturizes and protects the skin.

- **Inulin and Alpha glucan oligosaccharide**: active ingredients with a prebiotic action able to regulate the balance of the skin, stimulating its protective micro-organisms.

- **Phytosterols** with soothing action, able to strengthen and repair the skin barrier

- **Shea Butter**: active with moisturizing and protective action. It has soothing and antioxidant properties.



N.921

# HAND WASH SANITIZING GEL

To feel protected



This 100% alcohol free hand wash gel is formulated with innovative, natural ingredients: licorice, green tea and lactobacilli, in a certified mix with sanitizing action. Enhanced with Fucose sugar (found in breast milk too), to help moisturize and protect hands. Using natural ingredients, the formula is gentle on skin to clean and protect hands while being kind to the environment. Suitable for frequent use.

**SANITIZING ACTION TESTED IN  
LABORATORY**

## Main ingredients:

- **Licorice**, with anti-inflammatory and antioxidant components present in its root
- **Green tea**, inhibits the growth of bacteria and thanks to its rich composition in vitamins A, C B2 and E improves skin elasticity.
- **Lactobacilli**, are microorganisms capable of converting lactose and other sugars into lactic acid. Among their numerous properties it excels the antiinflammatory and antibacterial one.
- **Fucose**, sugar contained in breast milk too, moisturizes and protects the skin.



# HYGIENE LINE

Raising a confident child





ERGO-COMFORT  
HIGH BACKREST  
NON-SLIP EDGES  
STANDS ON ITS OWN

N.926

**SOFA**

The revolutionary  
toilet training seat



- Ergonomic design
- High backrest to ensure maximum comfort
- Splash guard for boys
- Wide and raised handles to ensure maximum stability for the child
- Non-slip edge for perfect adherence to the toilet
- Stands on its own for easy storage
- Cm 42 x 35 x 9



Colours available



MULTI-FUNCTIONAL:

1. TRAVEL POTTY
2. STAND-ALONE POTTY
3. TOILET TRAINER

N.905

**ROADY**

3-in-1 travel potty

- Compact and lightweight, perfect for travel
- Includes 3 super-absorbent, disposable liners for worry-free travel
- Removable inner bowl is easy to remove for quick cleaning or for use as a toilet trainer
- Folds flat for storage and travel
- Non-slip, rubber base for stability
- Legs lock into 3 positions:
  - Standing for use as a potty seat
  - Fully extended to fit over toilet seat
  - Folded for storage and travel
- Works with both round and elongated toilets

- Additional liners sold separately
  - Folded potty dimensions: cm 24,5 x 8 x 24,5
- Toilet reducer dimensions: cm 37 x 13,5 x 24,5
- Potty dimensions: cm 24,5 x 24 x 3,5



**DISPOSABLE LINERS  
AVAILABLE:**



907 30 pz

908 10 pz

Colours available



ERGO-COMFORT  
MAXIMUM ADHERENCE  
SPLASH GUARD  
EASY TO CLEAN

N.785  
**DUCKA**  
The seat reducer  
with slip-proof edges



REMOVABLE  
SOFT PADDED SEAT  
TWO HANDLES  
ANTI-SLIP RUBBER  
CAPS

N.825  
**PINGUO  
SOFT**  
The soft toilet  
seat reducer



- A funny toilet reducer with beak and edges made of slip-proof rubber
- Can be fitted securely to most toilet seats
- The rubber and polypropylene form one single piece, facilitating the cleaning and improve the hygiene
- Splash guard for boys
- It is possible to hang it up wherever you want thanks to its specific hook
- Cm 32,5 x 9,5 x 41

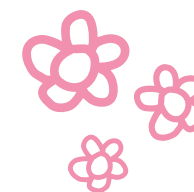
Colours available



- Can be fitted securely to most toilet seats
- Padded seat can be removed easily for cleaning
- Anti-slip rubber caps that prevent the toilet seat reducer from moving
- It is equipped with two handles that the kid can hold on to
- Cleverly angled to minimize any splashing
- Cm 44 x 9 x 43



Colours available





- ERGO-COMFORT
- MAXIMUM ADHERENCE
- SPLASH GUARD
- EASY TO CLEAN

N.821

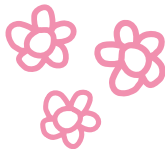
**ERGO**

Eeasy toilet training



- Can be fitted securely to most toilet seats
- Splash guard for boys
- It goes between the toilet bowl and the seat
- Cm 32 x 14 x 38

Colours available



- TEXTURED
- SURFACE GRIPS
- ANTI-SLIP BASE
- LIGHTWEIGHT

N.820

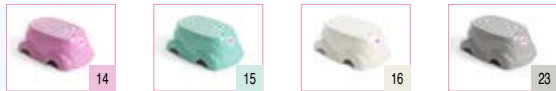
**HERBIE**

Slip-proof step-up stool

- Anti-slip base with textured grips on the top for stability
- Step height is 17.5 cm (7 inch)
- Lightweight step stool is the perfect size for toddlers
- Makes it easier to reach and use the sink, bathroom or kitchen
- Cm 44,5 x 17,5 x 31



Colours available



ERGO-COMFORT  
SPLASH GUARD  
EASY TO CLEAN

N.891  
**PASHA**  
The futuristic potty



ERGO-COMFORT  
LIGHTWEIGHT

N.709  
**RELAX**  
The essential potty



- Removable, inner bowl with easy to grab handle for quick, efficient clean up
- High backrest that ensures the maximum comfort
- Tapered front makes it easy for toddler to sit down and stand up
- Seamless seat for comfort and cleanliness
- Splash guard for boys
- Cm 33,5 x 36,5 x 31



Colours available



- Ergonomically designed
- The backrest promotes good posture
- Comfortable to use
- Cm 35 x 23 x 36



Colours available





INTERACTIVE SOUNDS  
FUN TO USE  
EASY TO CLEAN

N.707  
**QUACK**  
The duck potty



INTERACTIVE SOUNDS  
FUN TO USE  
EASY TO CLEAN

N.822  
**SCOOTER**  
The scooter potty



- Fun and friendly potty seat makes potty training entertaining
- Ergonomic seat is comfortable for baby
- Front detaches for easy, thorough cleaning
- Press beak to make fun sounds
- Cm 29 x 33,5 x 42

Colours available



- Fun and friendly potty seat makes potty training entertaining
- Ergonomic seat is comfortable for baby
- Front detaches for easy, thorough cleaning
- Press headlight to make fun sounds
- Handlebars – just like a real scooter!
- Cm 33 x 31 x 44

Colours available



ERGO-COMFORT  
DETACHABLE FRONT  
EASY TO CLEAN

N.782  
**SPIDY**  
The rabbit potty



CE



- Ergonomically designed, comfortable seat
- Toy potty with rattle to entertain your little one
- Detachable front for easy cleaning
- Cm 31 x 32 x 43

Colours available



CE



Colours available



- A fun and friendly potty with a shape of a real car
- Ergonomic seat is comfortable for baby
- Provided with useful lid for a better transport
- Cm 36 x 17 x 23

N.716  
**MAGGIOLINO**  
The car potty

- A fun and friendly potty with a shape of a hippo
- Ergonomic seat is comfortable for baby
- Provided with useful lid for a better transport
- Cm 39 x 16 x 24

N.714  
**IPPOPOTAMO**  
The hippo potty

CE



Colours available







## IN & OUT LINE

Making your child feel at ease

**MAX 12 MONTHS**  
**MAX 11 KG**  
Child's maximum  
weight

Conform to the  
European Standard  
**UNI EN 12221**



CAN BE USED ON  
ALL FLAT SURFACE

FOLDAWAY LEGS

LATERAL  
COMPARTEMENTS

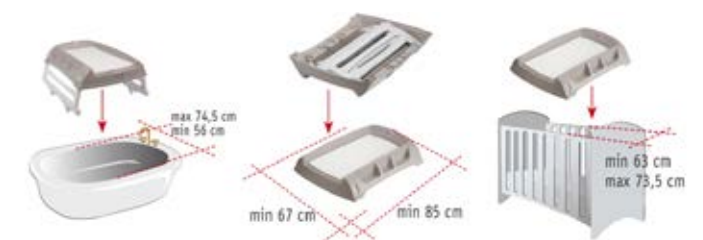
N.839

**FLAT**

The changing table that  
can be used everywhere

- It can be used on the table, on the baby's crib or on the adult's bath tub
- It is provided with foldaway legs with expandable adjustable system that makes it easy to fix it on the bath tub
- Dimensions with folded legs:  
cm 66,5 x 18,3 x 84,5

- For the use on the CRIB:  
external length between the borders from  
cm 63 to cm 73,5
- For the use on the BATH TUB:  
Max Internal length cm 74,5
- For the use on the TABLE:  
Minimum needed dimensions for a correct  
positioning cm 67 x cm 85





8-18 MONTHS

DESIGNED TO PROTECT  
BABY'S SCALP FROM  
ACCIDENTAL MINOR  
IMPACTS BUMPS

ANTI IRRITATION

MICROPLAST VELCRO  
FASTENER DELICATE  
ON THE SKIN

N.929

## CRAWLING HELMET

The fun of a hat,  
the protection  
of a helmet



- Adapts to the head shape of any child aged from approx. 8 to 18 months (head size: 44-52 approx.)
- Microplast Velcro fastener delicate on the skin, for adjustment around the head, forehead-neck and temples
- When the visor is raised, it adds further protection for the nasal septum
- Non-scratch 100% polyester outer covering
- Internal lining made of Sanitized® soft material to eliminate and prevent the formation of mould and bacteria



CE

Colours available



- Lightweight and slim-line
- Suitable for jackets, t-shirts, towels and accessories
- Dishwasher-safe
- Cm 29,5 x 14 x 0,8

N.887

## LOOP

Everything tidy





PRATICAL STORAGE  
SOLUTION

NAPPIES AND SOAP  
HOLDER

TWO COMPARTEMENTS

N.805

## BEAUTY CARE

Everythings at  
your fingertips



- A handy case that carries everything you need for your baby
- Ergonomically designed, with smooth durable plastic casing
- Soft, easy grip handle making this both functional and practical
- Also makes an ideal vanity case for you
- Cm 45 x 31 x 27



MADE IN ITALY



**BIKE SEAT  
COLLECTION**

Making your child feel safe







COMPARATIVE TABLE

				
	Baby Shield	Baby Shield for carrier	10+	Orion
In compliance with UNI EN 14344	✓	✓	✓	✓
To be fixed on the seat tube with diameter between 28 and 40 mm	✓		✓	
To be mounted on bike carrier		✓		
The seat can be shifted horizontally	✓	✓	✓	✓
Supporting arm to dampen vibrations caused by the unevenness of the road	✓		✓	✓
Reclining backrest with automatic barycenter system			✓	
3-point safety harness adjustable both in height and in length	✓	✓	✓	✓
Footrests adjustable in height	✓	✓	✓	✓
Footrests equipped with safety straps	✓	✓	✓	✓
Approved Rear reflector	✓	✓	✓	
Removable padding	✓	✓	✓	✓
Thermoformed, water-repellent and wheatherproof padding	✓	✓	✓	✓
Equipped with anti-theft system	✓		✓	
It can be mounted on power-assisted bicycles (E-bikes)	✓	✓	✓	✓

MAX WEIGHT  
FROM 9 TO 15 KG  
MAX HEIGHT  
93 CM

Conform to the  
European Standard  
**EN 14344**



• Cm 43 x 26,5 x 59

N.760  
**ORION**  
On a bike from  
7/8 months



Suitable for bike frames with head tube Ø 32 to 52 mm



Front handle bar can be opened and removed



Footrests adjustable in height



Supporting system that dampens the unevenness of the road



3-point adjustable safety harnessh



Ergonomic design



Thermoformed, water-repellent and wheatherproof padding

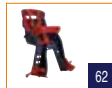


Bracket supplied, can be mounted on most frame types



The seat can be shifted horizontally

Colours available





MAX WEIGHT  
FROM 15 TO 22 KG  
MAX HEIGHT  
110 CM

Conform to the  
European Standard  
**EN 14344**

MAX WEIGHT  
FROM 15 TO 22 KG  
MAX HEIGHT  
110 CM

Conform to the  
European Standard  
**EN 14344**

• Cm 43 x 38 x 88

N.732

# BABY SHIELD

Maximum protection



• Cm 40x 35 x 85

N.722

# 10+

Reclining rear bike seat

- Suitable for bike frames with seat tube Ø 28 to 40mm
- The seat can be shifted horizontally
- 3-point adjustable safety harnessh

- Supporting system that dampens the unevenness of the road
- Anti-theft bracket
- Rear reflector

- Footrests adjustable in height
- Ergonomic design
- Thermoformed, water-repellent and wheatherproof padding

- Suitable for bike frames with seat tube Ø 28 to 40mm
- The seat can be shifted horizontally
- 3-point adjustable safety harnessh

- Supporting system that dampens the unevenness of the road
- Reclining backrest (15°)
- Automatic barycenter system\*\*

- Rear reflector
- Footrests adjustable in height
- Ergonomic design
- Thermoformed, water-repellent and wheatherproof padding
- Anti-theft bracket



\*\*You can recline the bike seat (with the child on it) without compromising the balance, because the center of gravity stays in place over the center of the wheel.



MAX WEIGHT  
FROM 15 TO 22 KG  
MAX HEIGHT  
110 CM

Conform to the  
European Standard  
**EN 14344**

• Cm 43 x 38 x 88

N.738

# BABY SHIELD

Rear bike seat for carrier



Bike carriers width from 120mm to 175mm\*\*



Rear reflector



3-point adjustable safety harnessh



Supporting system that dampens the unevenness of the road



Anti-theft bracket



Thermoformed, water-repellent and wheatherproof padding



Footrests adjustable in height



Ergonomic design

Colours available



29



50

\*\*With MINIMUM capacity of 27 Kg. The rack must comply with the Carrier European standard ISO 11243

## Accessories

**N.37390000**  
**Fastening bracket for carriers for Baby Shield**  
For bike carriers with width from 120 mm to 175 mm and with minimum capacity of 27 Kg. (ISO 11243)



**N.37490000**  
**Anti-theft bracket**



The supporting arm is not supplied

**Optional supporting arm for rear bike seats on different frames**



**N.37430000**  
Standard bike frames



**N.37430200**  
Bike frames with rear inclination



**N.37430100**  
Bike frames with front inclination



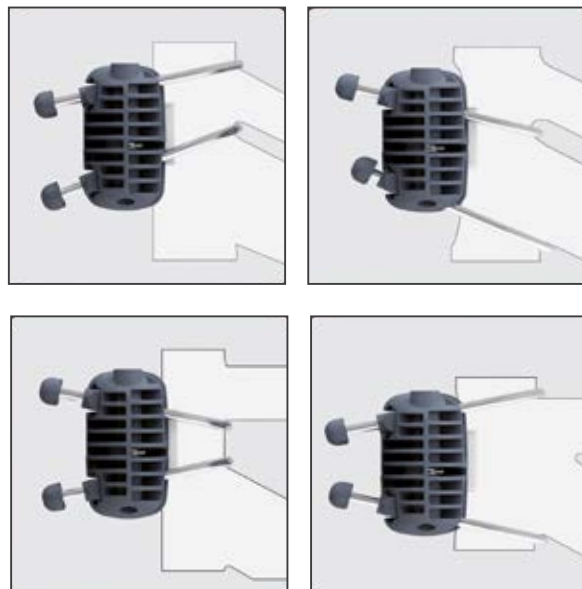
**N.37430700**  
Small bike frames for ladies' bikes



**N.37664000****Bracket for Orion front seat**

To be fixed to the head tube, it can be mounted on a wide range of frames, support arm is not included.

Ø  
32-52  
mm

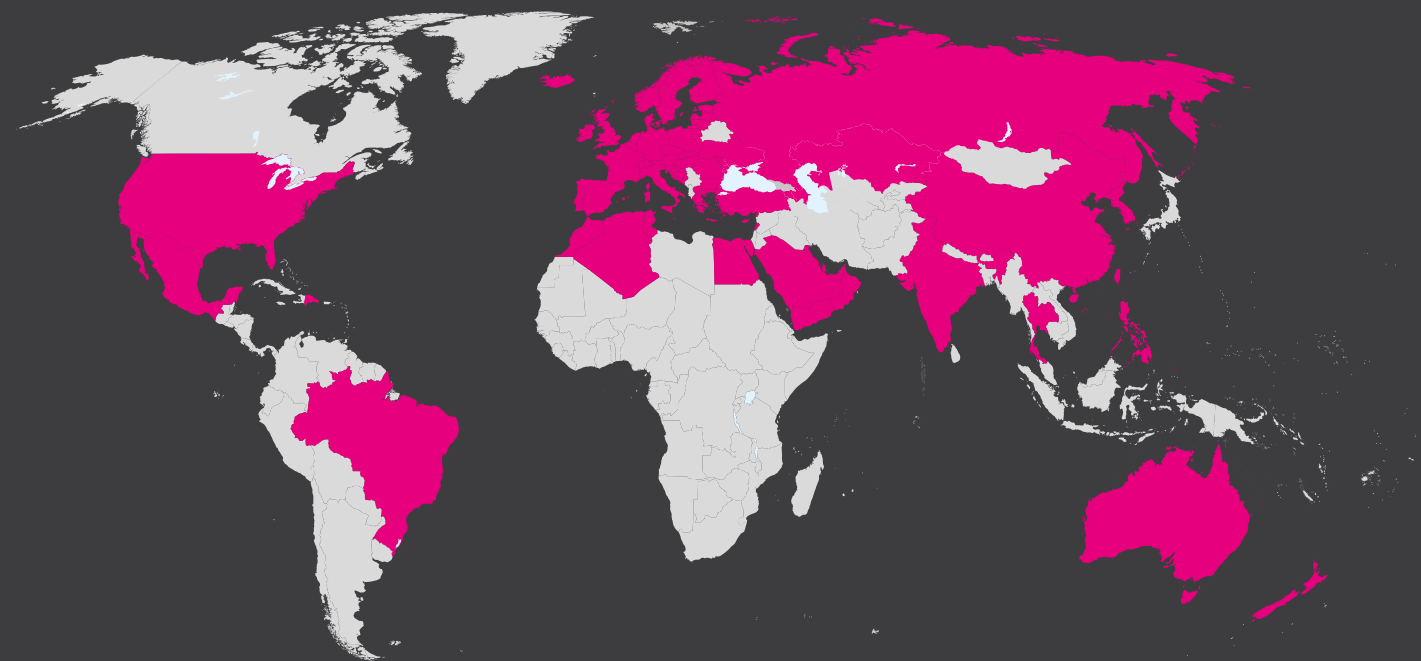
**N.903****Shark and LadyBug helmets**

- Age suitability: 8 months - 5 years approx. (size 46-53)
- Head size can be adjusted using a headband system with an adjustment dial
- Adjustable chin strap with quick release
- Internal padding in expanded polyurethane, covered with soft fabric, it can be hand washed in lukewarm water with neutral soap
- Weight: gr. 214
- Conform to the european standard EN 1078



MADE IN ITALY

**BABY**



Okbaby s.r.l. Via del Lavoro, 26  
24060 Telgate (BG) Italy Tel. +39 035 830004  
[www.okbaby.it](http://www.okbaby.it)

Export Sales Dept. Fax +39 0354491710 [silvia.erli@okbaby.it](mailto:silvia.erli@okbaby.it)  
Vendite Italia Fax +39 035832961 [vendite.italia@okbaby.it](mailto:vendite.italia@okbaby.it)